

Land at Millom Castle and Holy
Trinity Church, Millom, Cumbria

Community Archaeological
Geophysical Survey





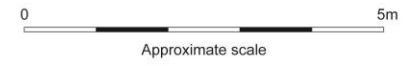








SOUTH EXTERNAL ELEVATION



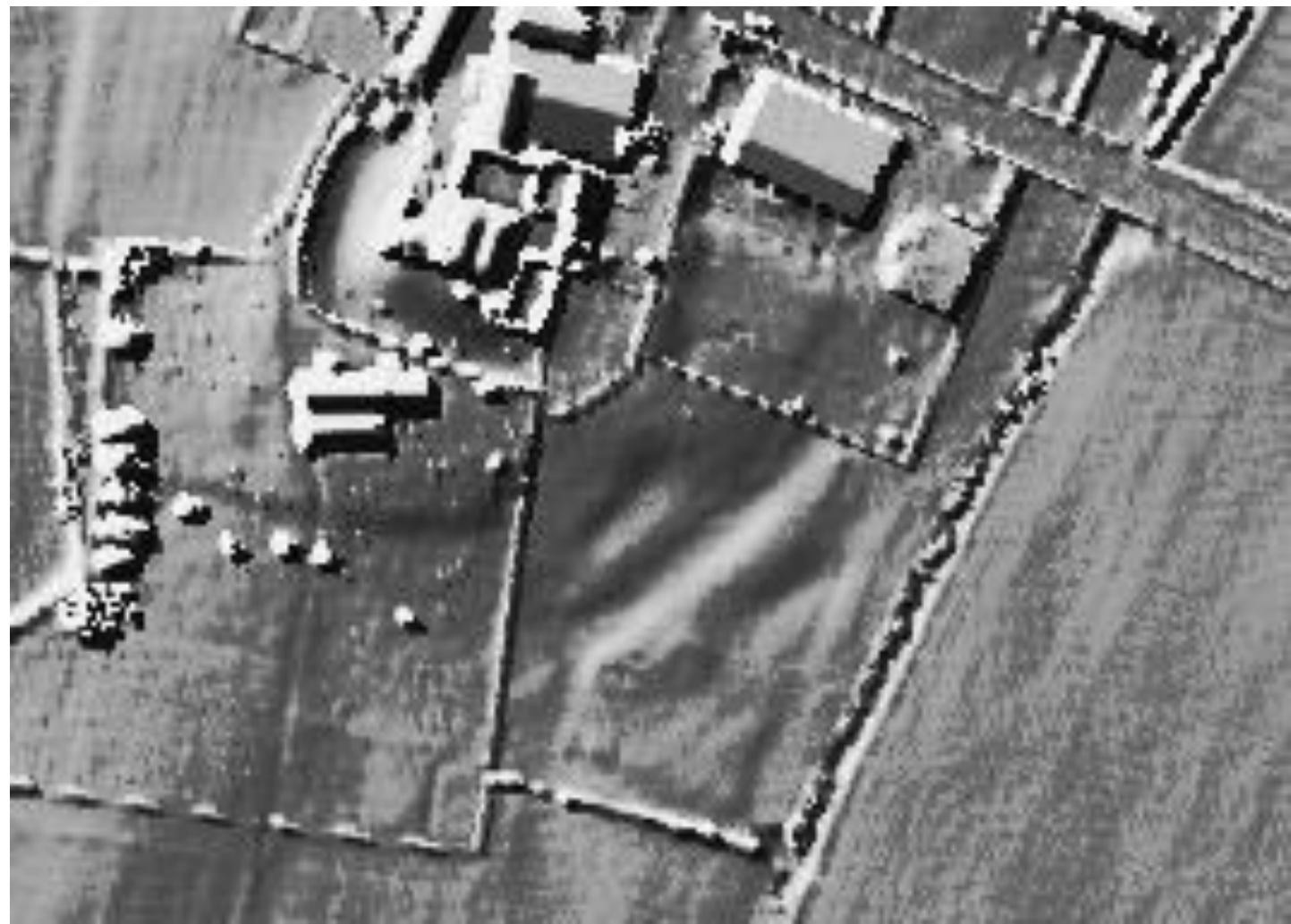
Holy Trinity Church, Millom, Cumbria









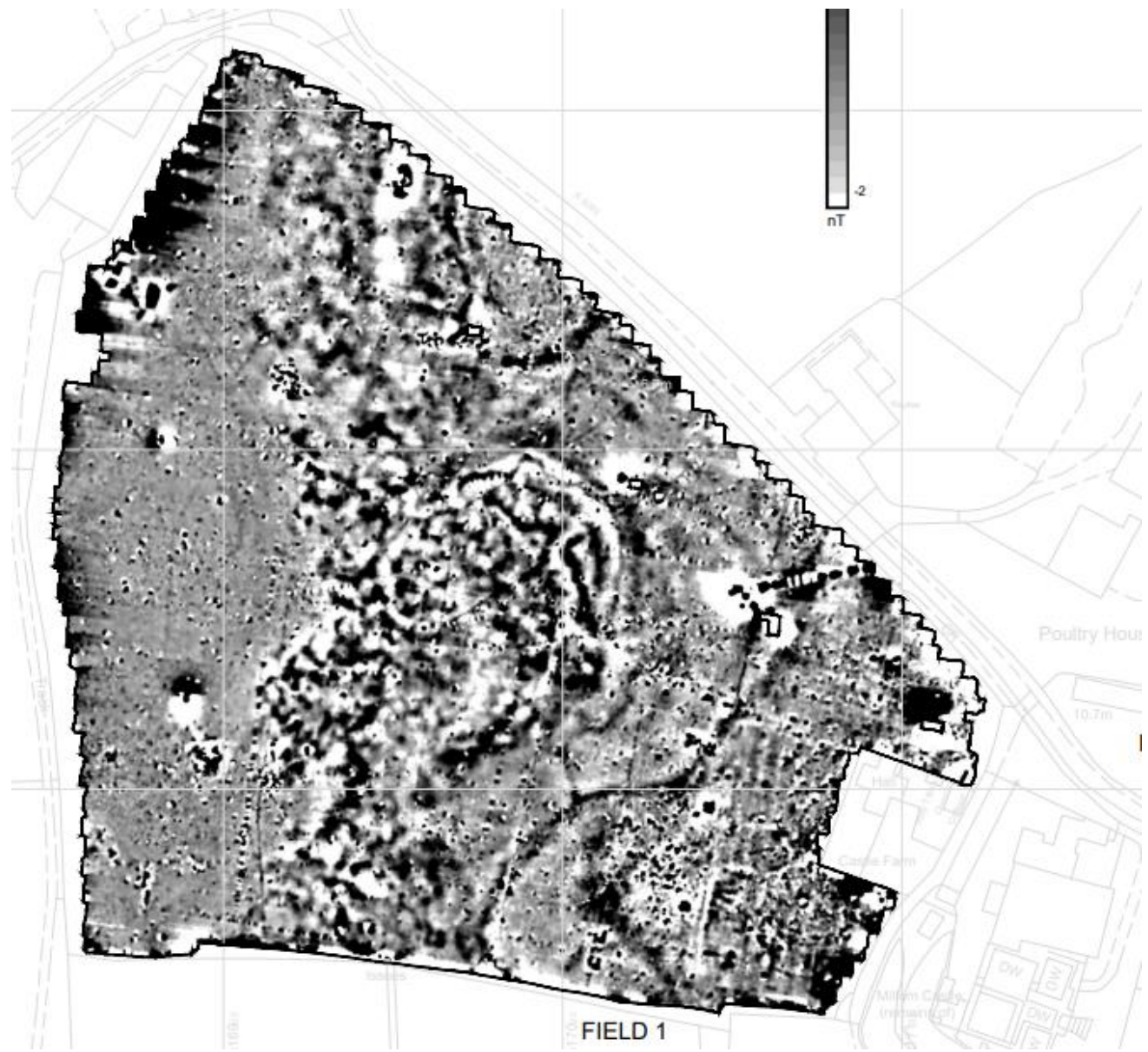


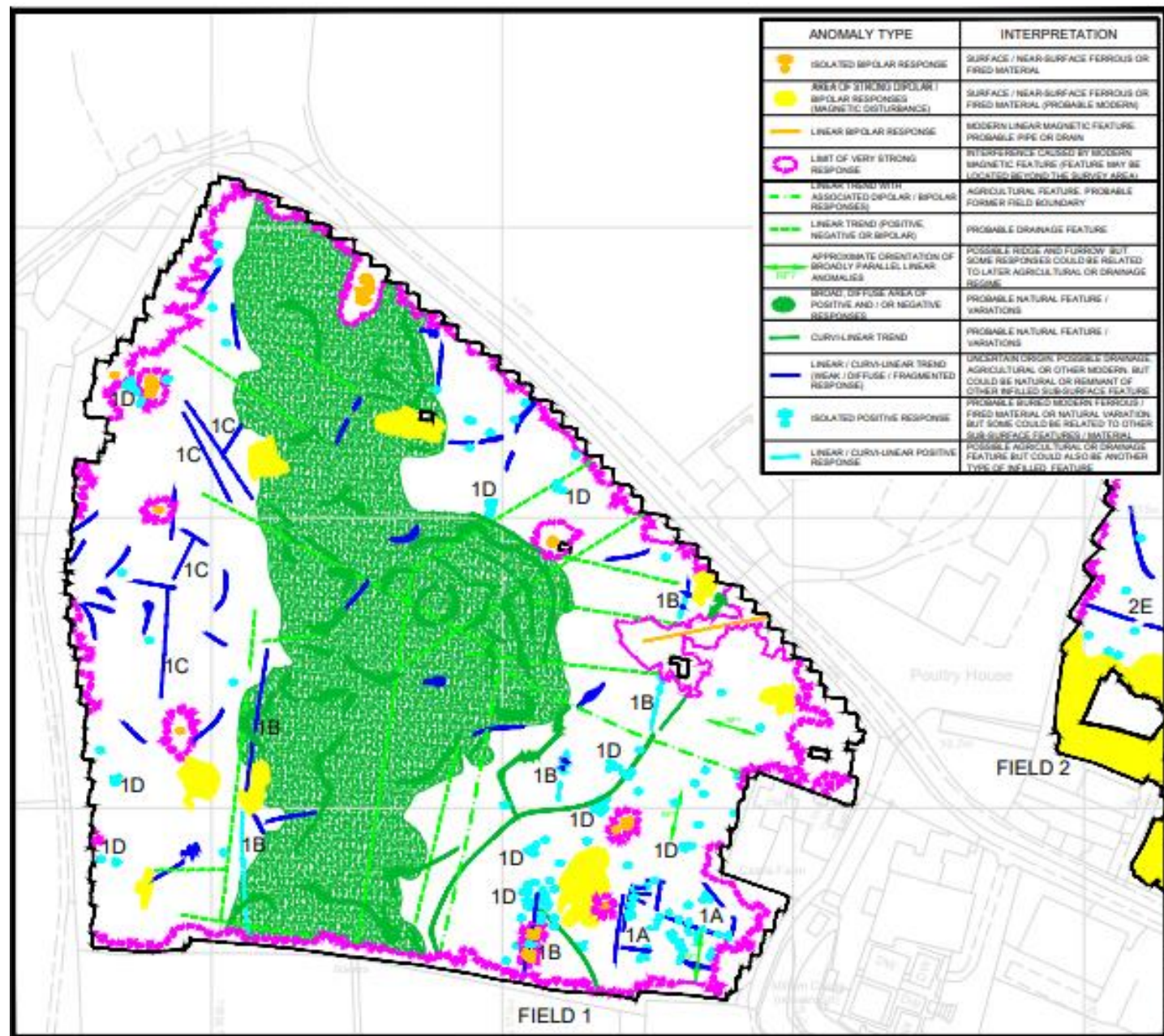




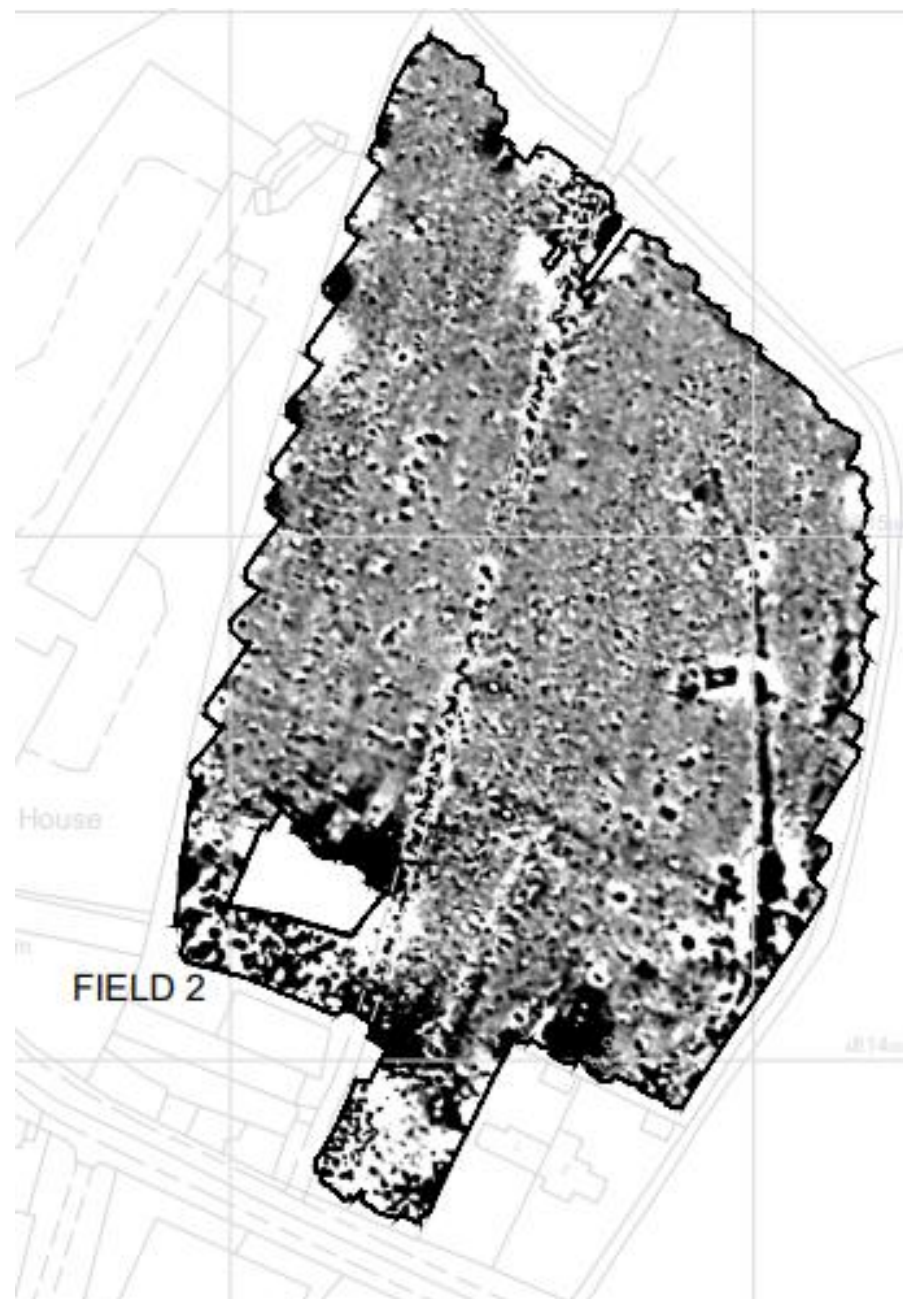


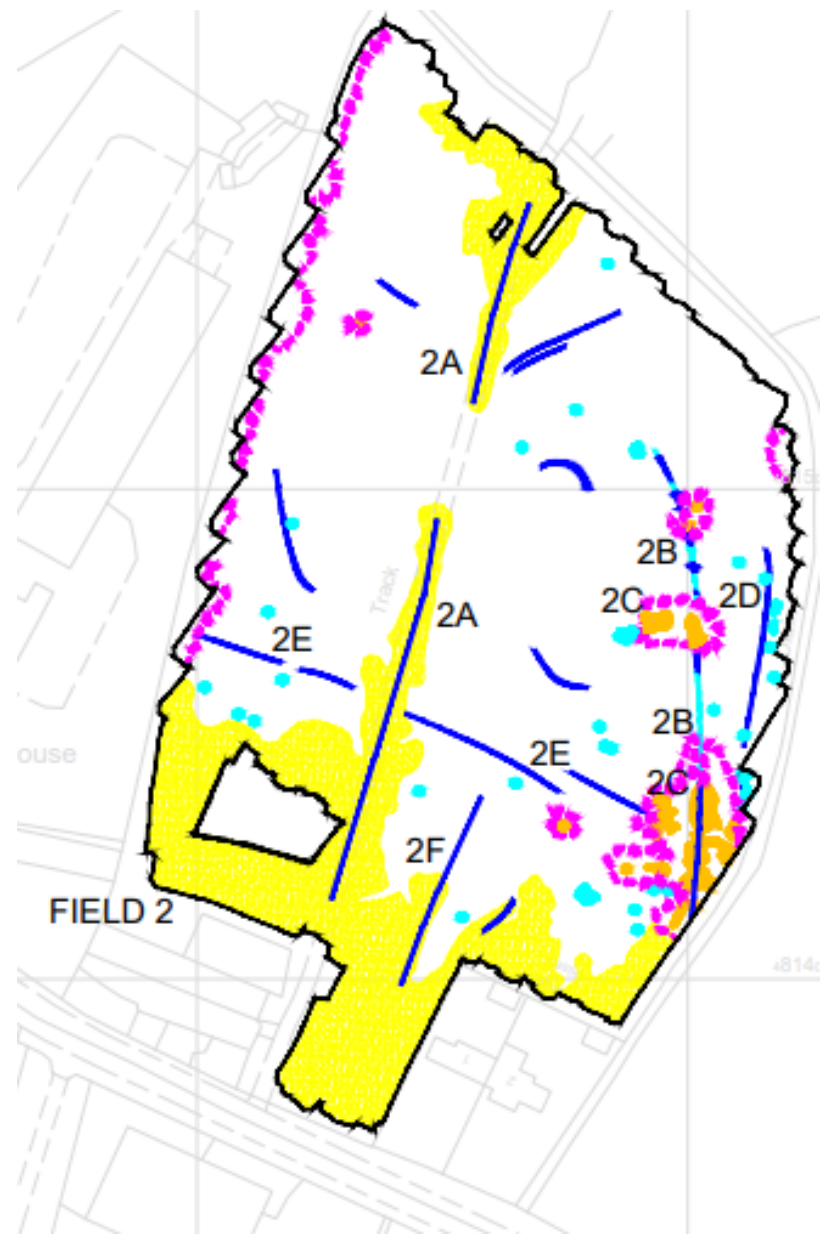






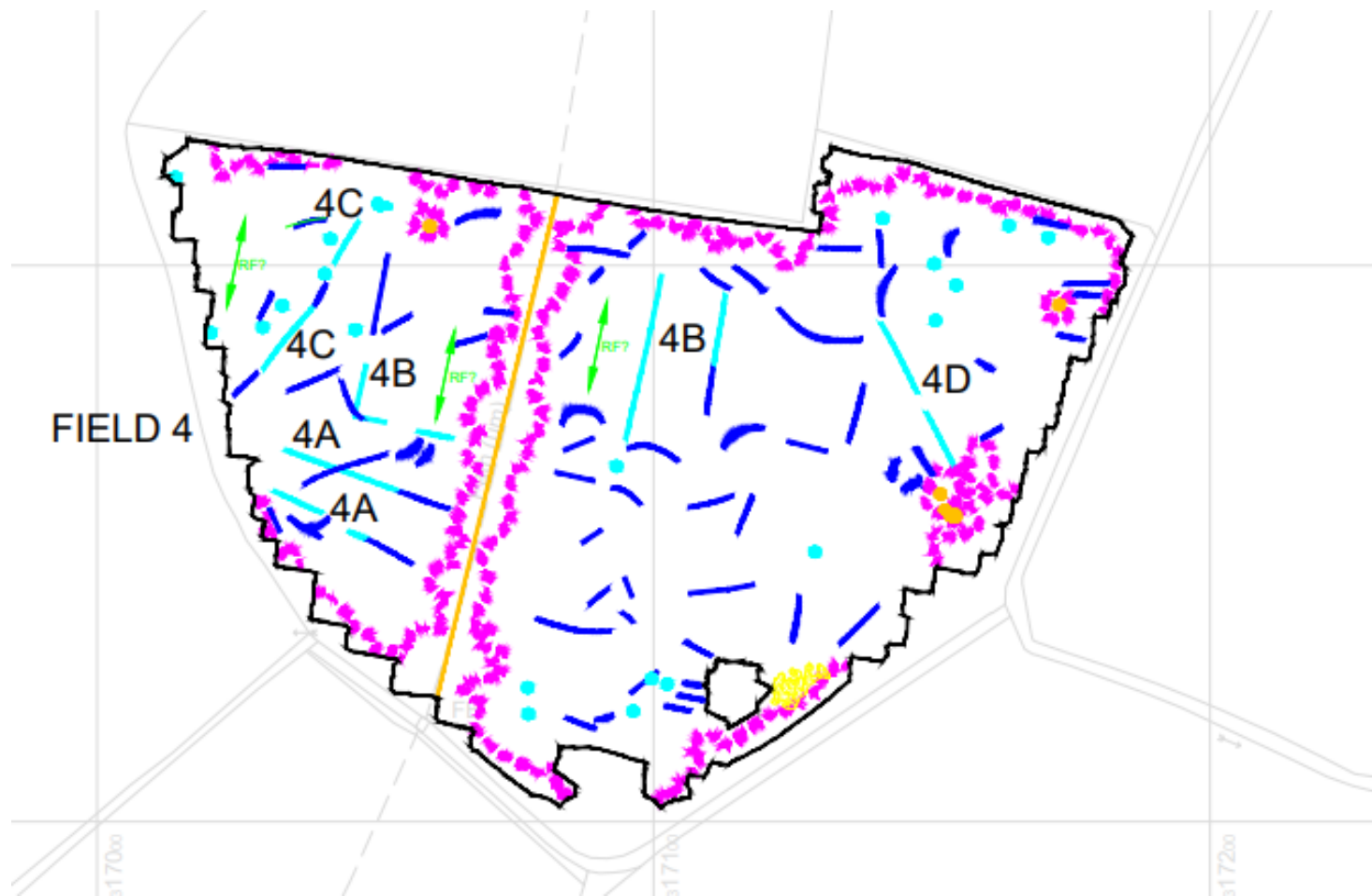
























ANOMALY TYPE	INTERPRETATION
 ISOLATED BIPOLAR RESPONSE	SURFACE / NEAR-SURFACE FERROUS OR FIRED MATERIAL
 AREA OF STRONG DIPOLAR / BIPOLAR RESPONSES (MAGNETIC DISTURBANCE)	SURFACE / NEAR-SURFACE FERROUS OR FIRED MATERIAL (PROBABLE MODERN)
 LINEAR BIPOLAR RESPONSE	MODERN LINEAR MAGNETIC FEATURE. PROBABLE PIPE OR DRAIN
 LIMIT OF VERY STRONG RESPONSE	INTERFERENCE CAUSED BY MODERN MAGNETIC FEATURE (FEATURE MAY BE LOCATED BEYOND THE SURVEY AREA)
 LINEAR TREND WITH ASSOCIATED DIPOLAR / BIPOLAR RESPONSES	AGRICULTURAL FEATURE. PROBABLE FORMER FIELD BOUNDARY
 LINEAR TREND (POSITIVE, NEGATIVE OR BIPOLAR)	PROBABLE DRAINAGE FEATURE
 APPROXIMATE ORIENTATION OF BROADLY PARALLEL LINEAR ANOMALIES	POSSIBLE RIDGE AND FURROW BUT SOME RESPONSES COULD BE RELATED TO LATER AGRICULTURAL OR DRAINAGE REGIME
 BROAD, DIFFUSE AREA OF POSITIVE AND / OR NEGATIVE RESPONSES	PROBABLE NATURAL FEATURE / VARIATIONS
 CURVI-LINEAR TREND	PROBABLE NATURAL FEATURE / VARIATIONS
 LINEAR / CURVI-LINEAR TREND (WEAK / DIFFUSE / FRAGMENTED RESPONSE)	UNCERTAIN ORIGIN. POSSIBLE DRAINAGE, AGRICULTURAL OR OTHER MODERN. BUT COULD BE NATURAL OR REMNANT OF OTHER INFILLED SUB-SURFACE FEATURE
 ISOLATED POSITIVE RESPONSE	PROBABLE BURIED MODERN FERROUS / FIRED MATERIAL OR NATURAL VARIATION. BUT SOME COULD BE RELATED TO OTHER SUB-SURFACE FEATURES / MATERIAL
 LINEAR / CURVI-LINEAR POSITIVE RESPONSE	POSSIBLE AGRICULTURAL OR DRAINAGE FEATURE BUT COULD ALSO BE ANOTHER TYPE OF INFILLED FEATURE

