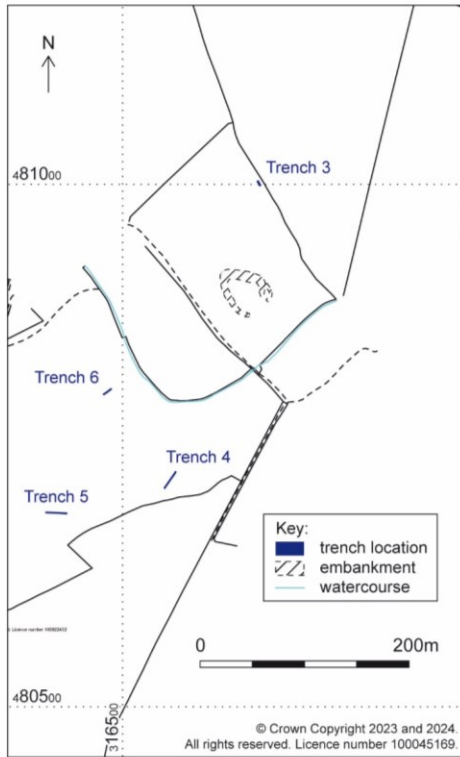
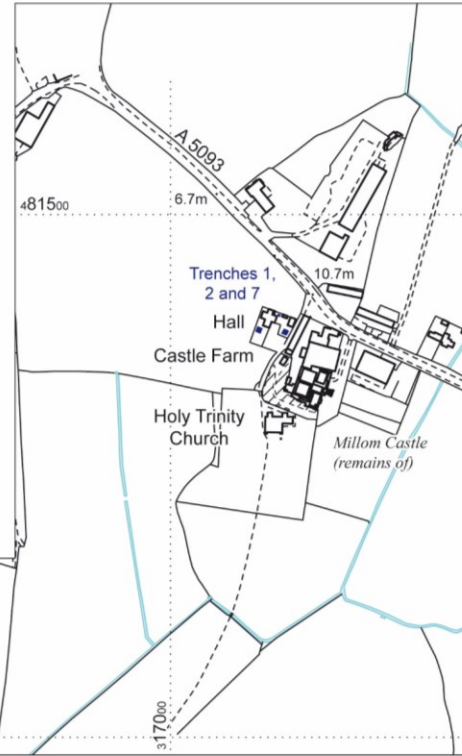
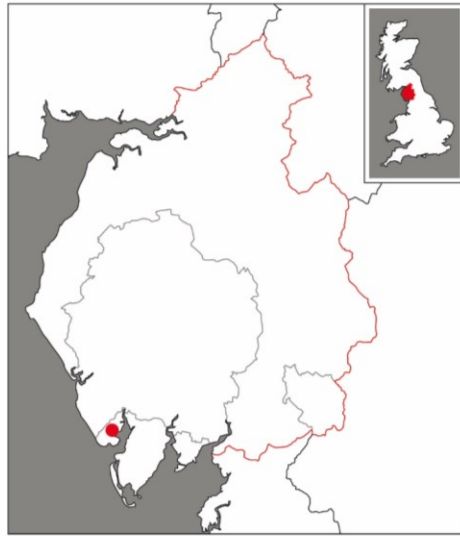
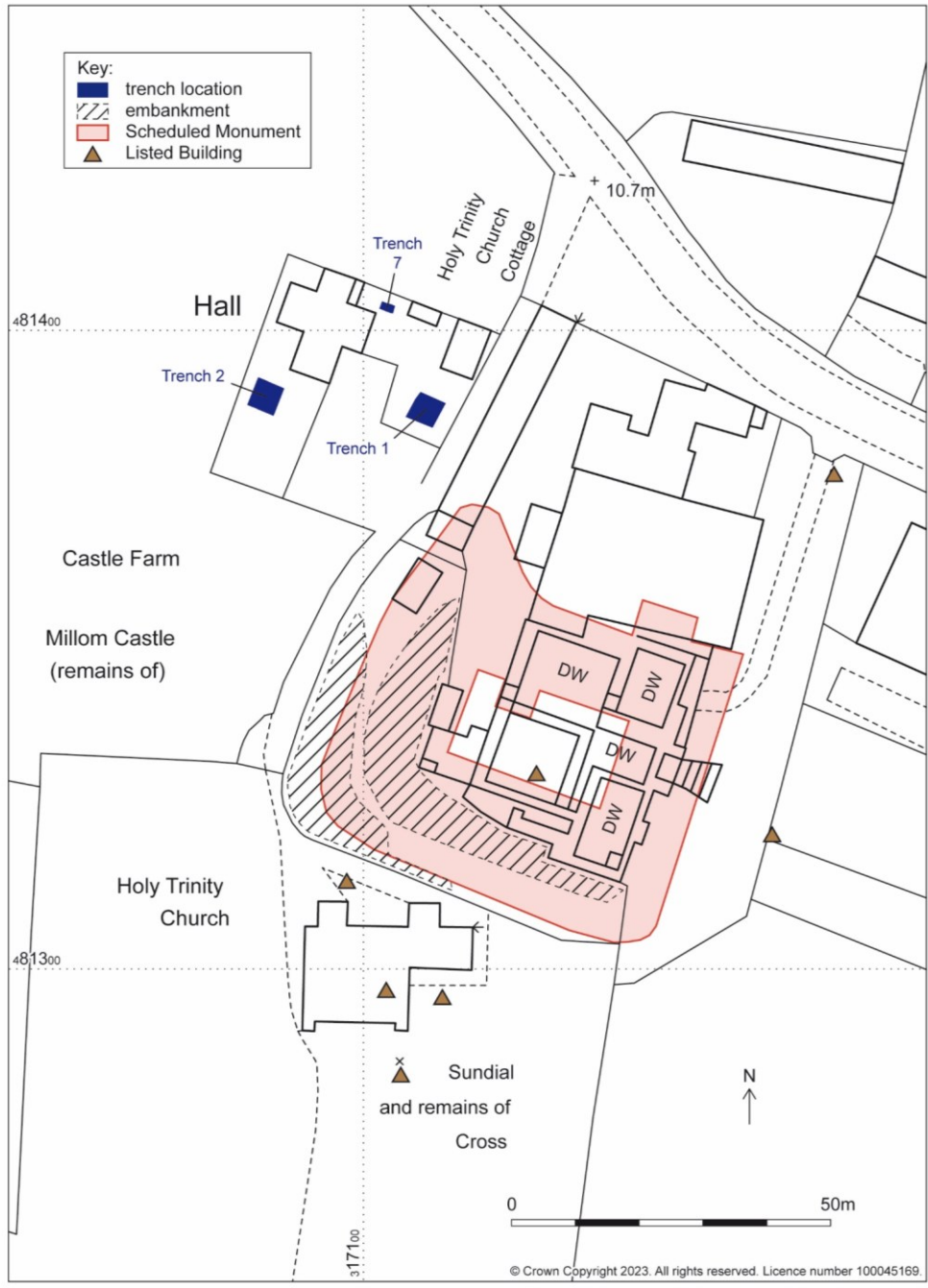


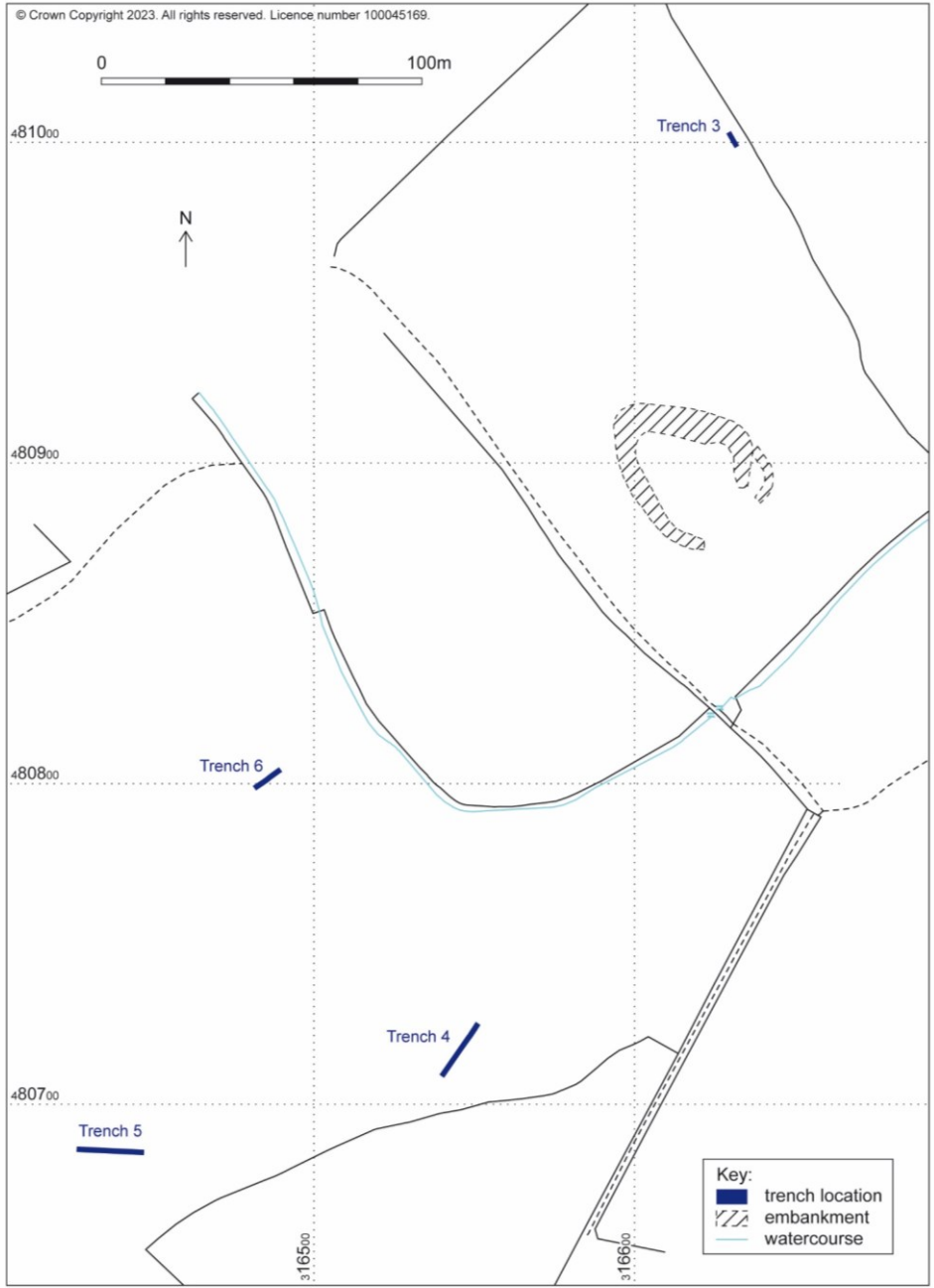
“Digging for Millom”

(Land at Holy Trinity School and Beck Farm, Millom)



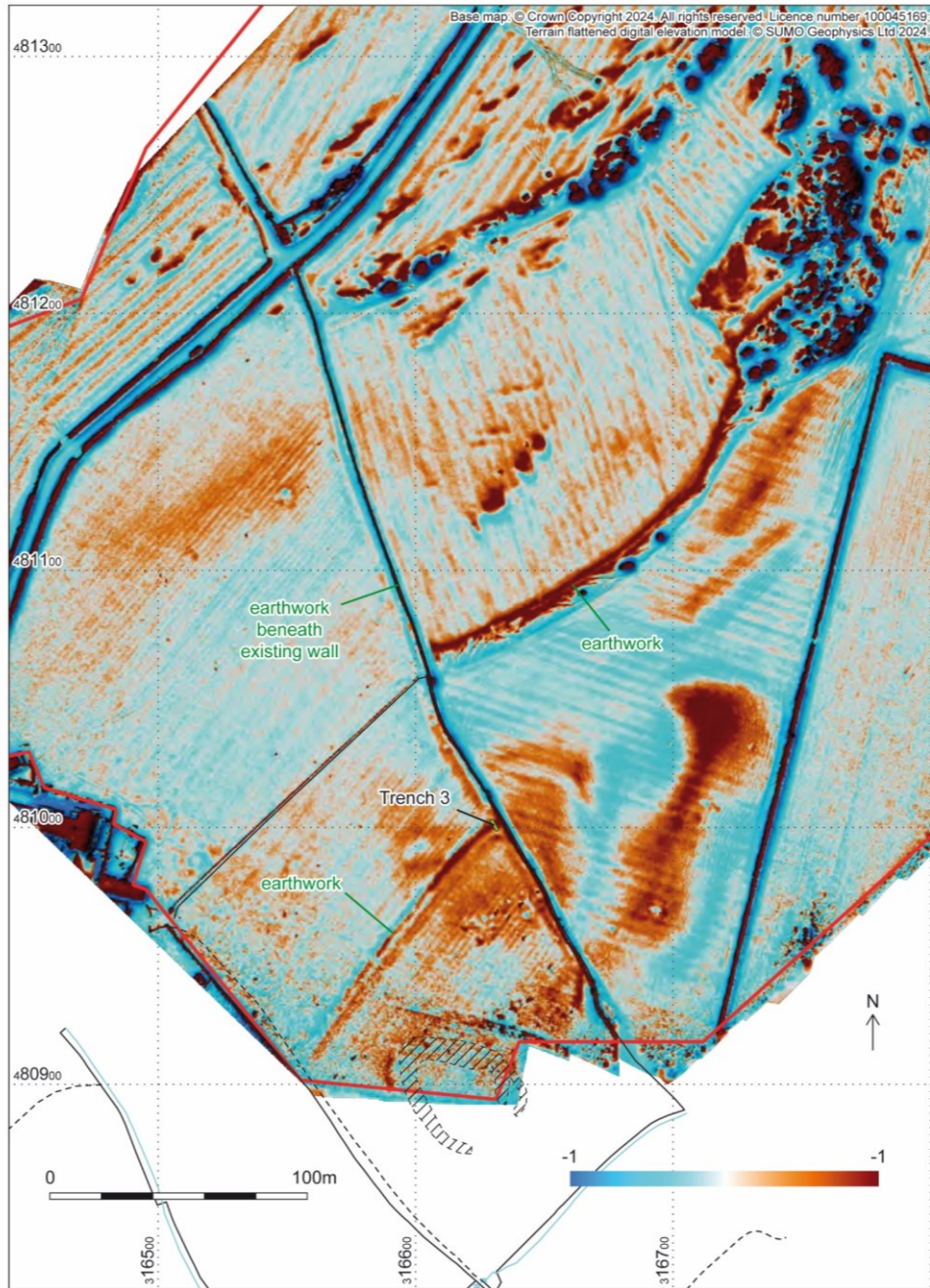




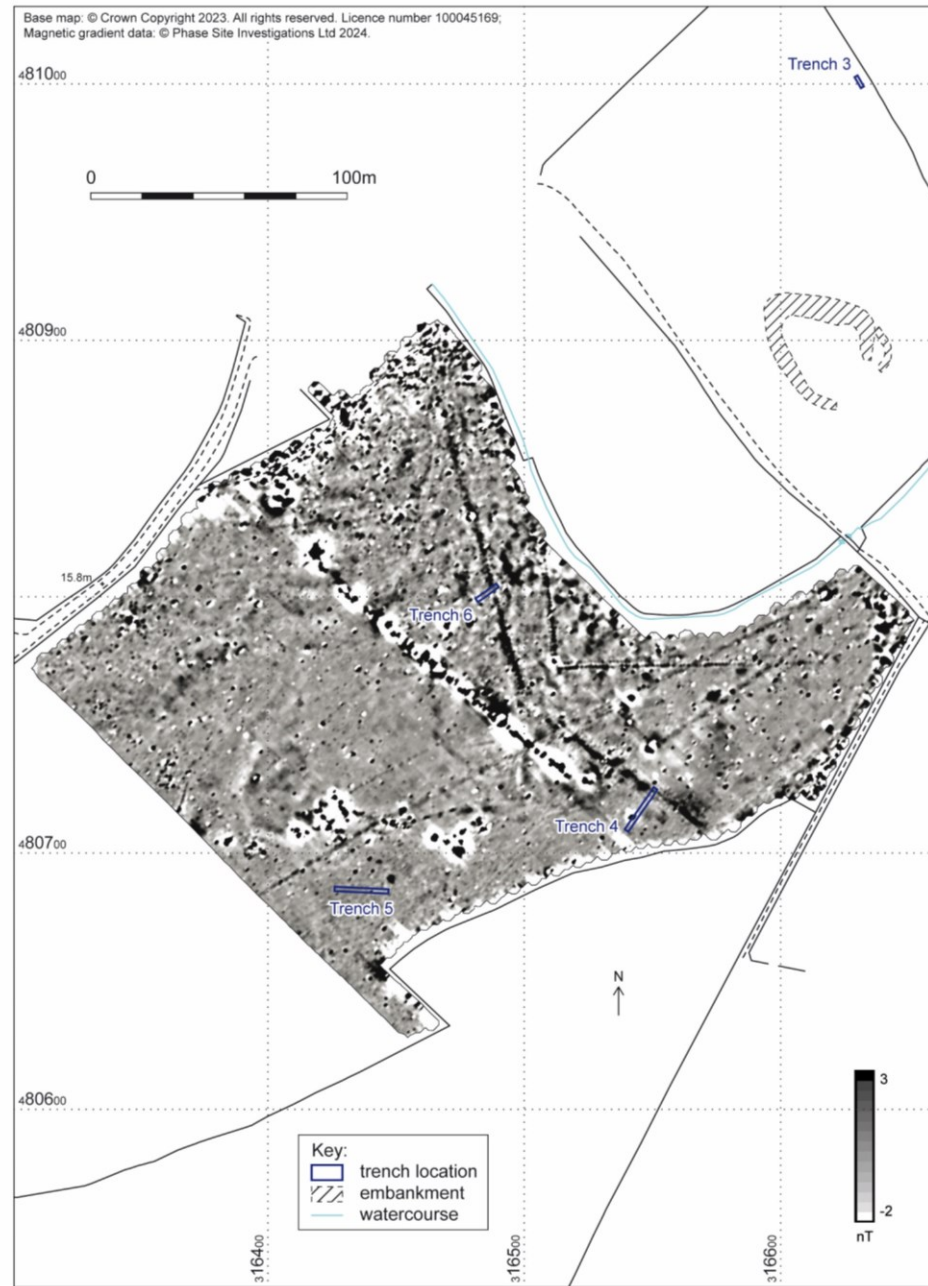


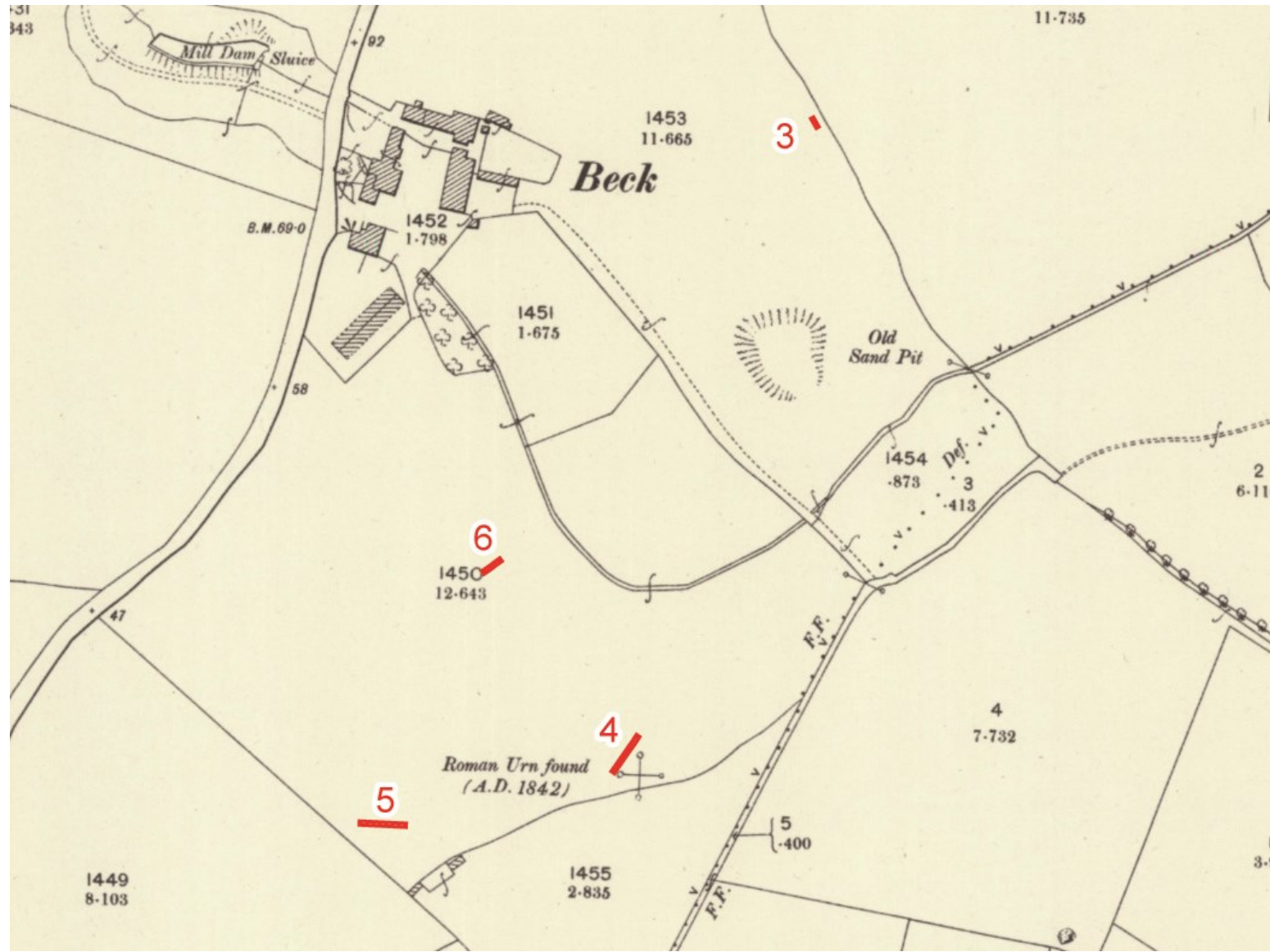






Base map: © Crown Copyright 2023. All rights reserved. Licence number 100045169;
Magnetic gradient data: © Phase Site Investigations Ltd 2024.



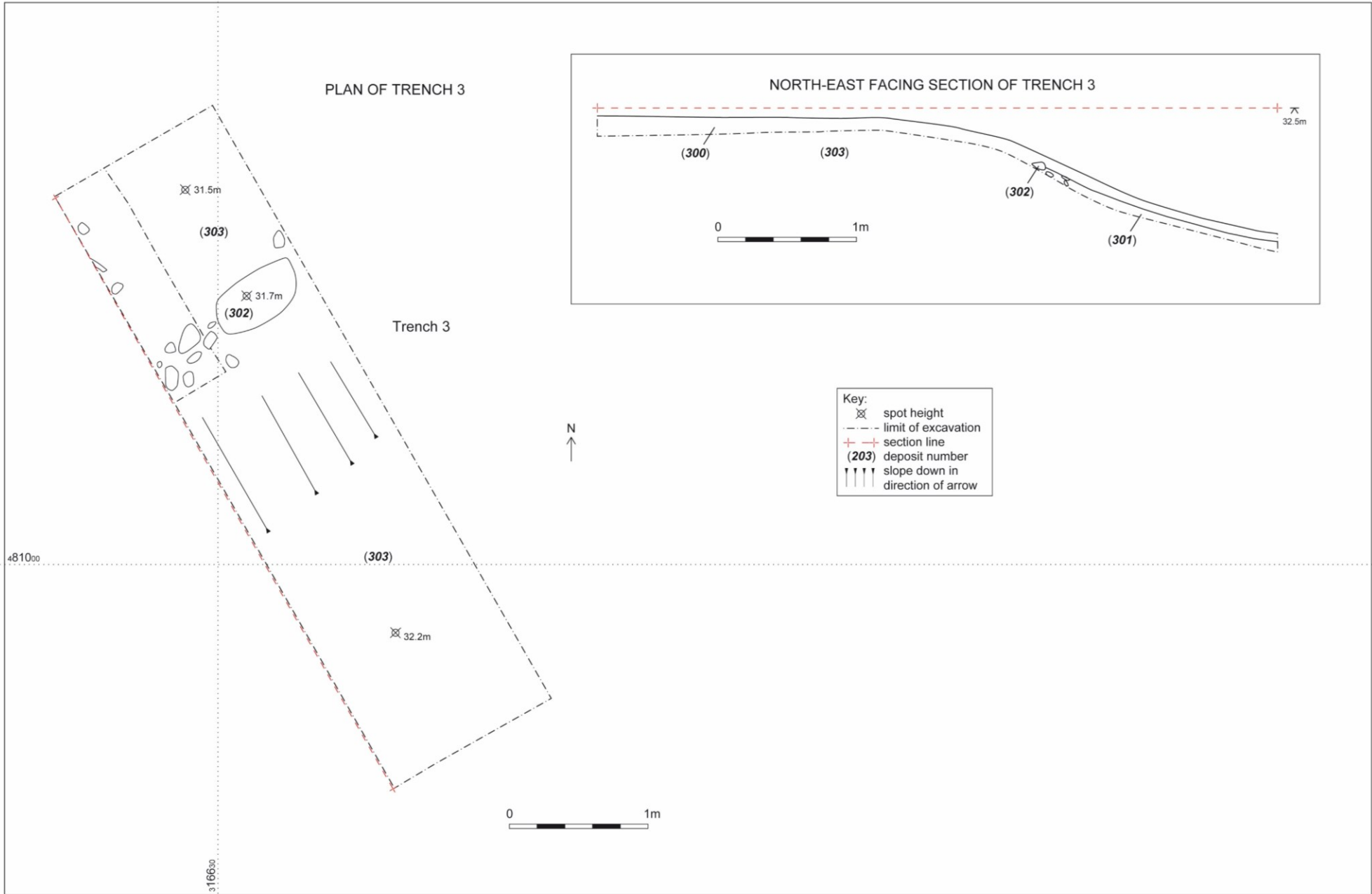


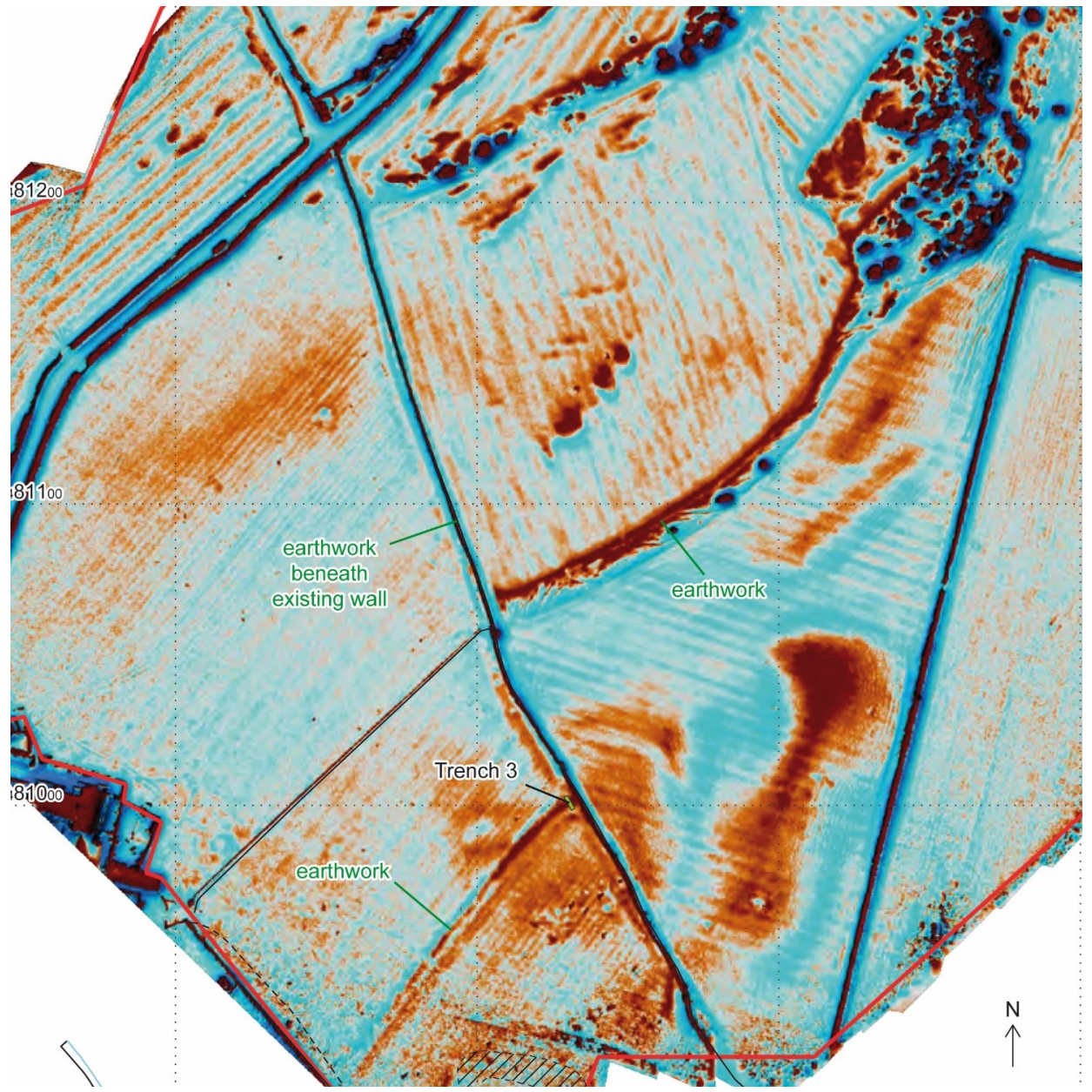


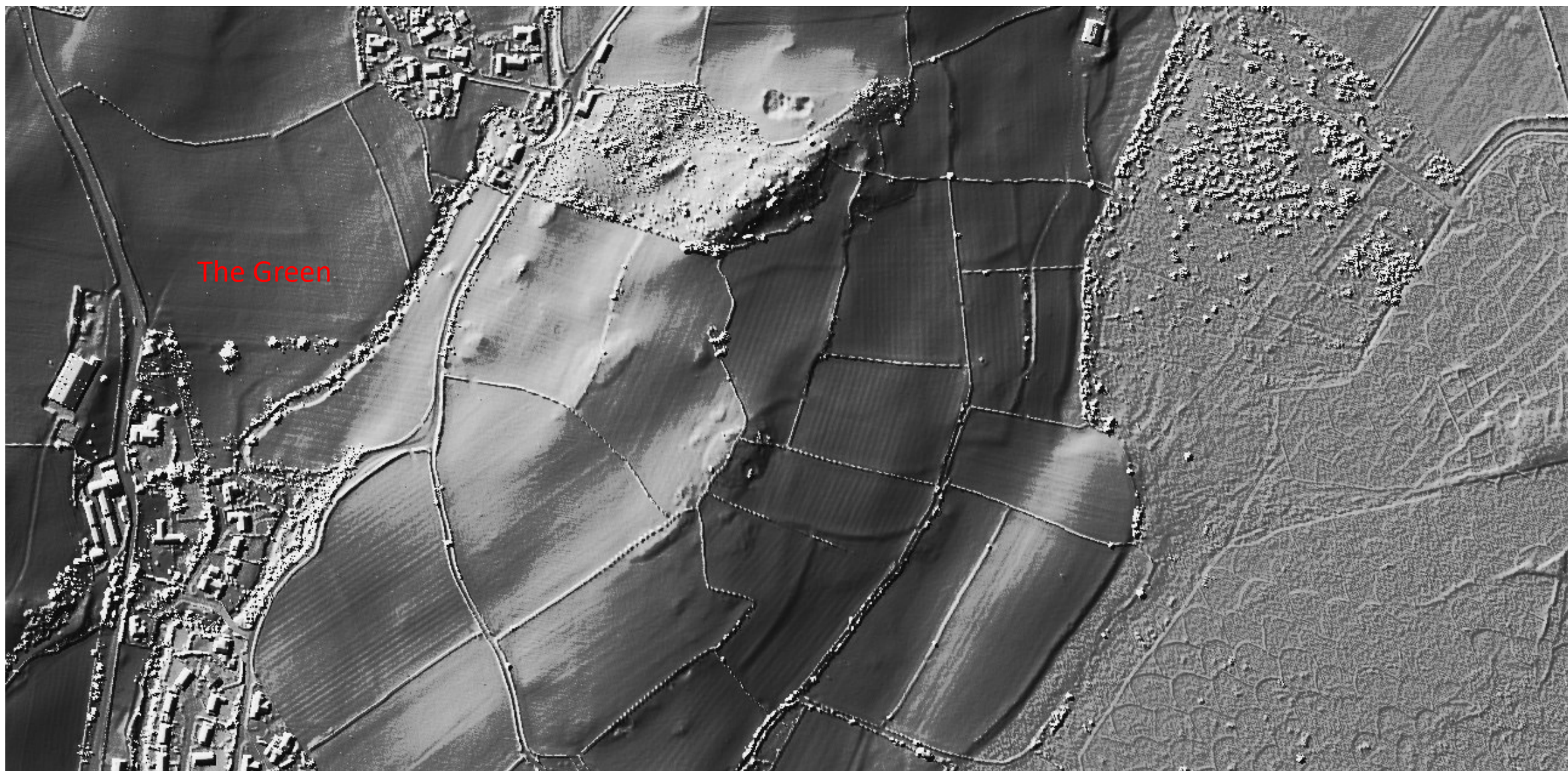
Hard working volunteers

Lovely view



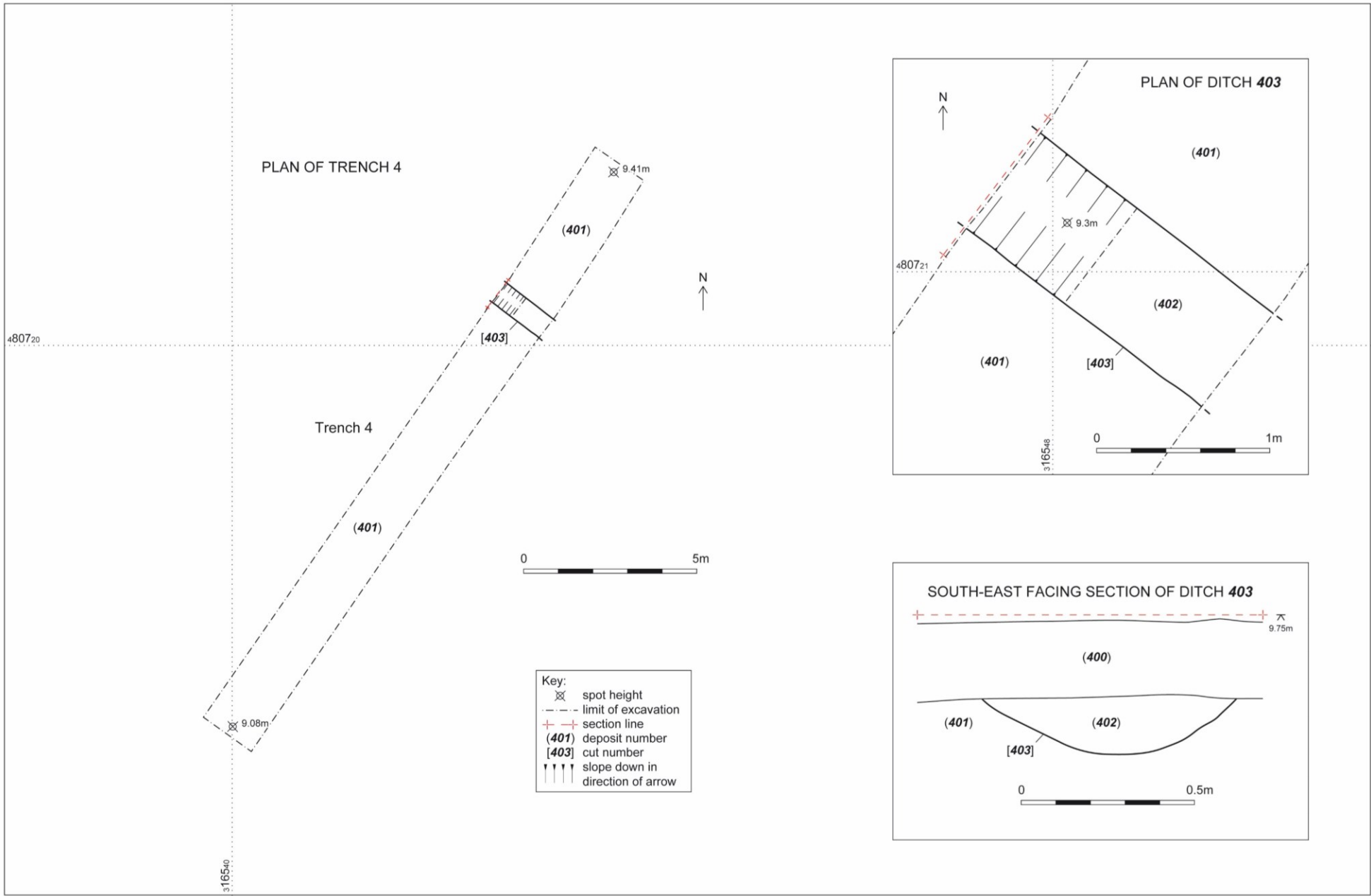






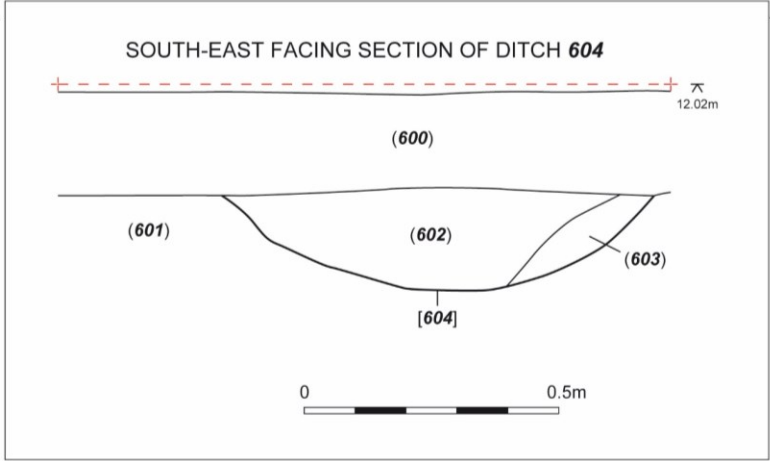
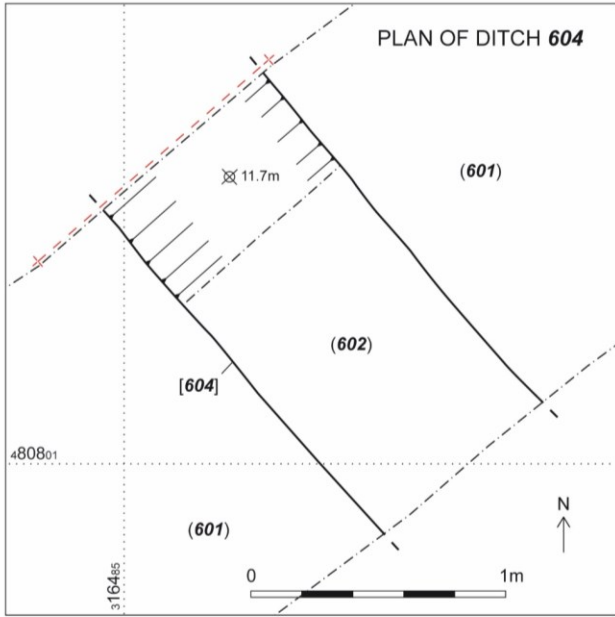
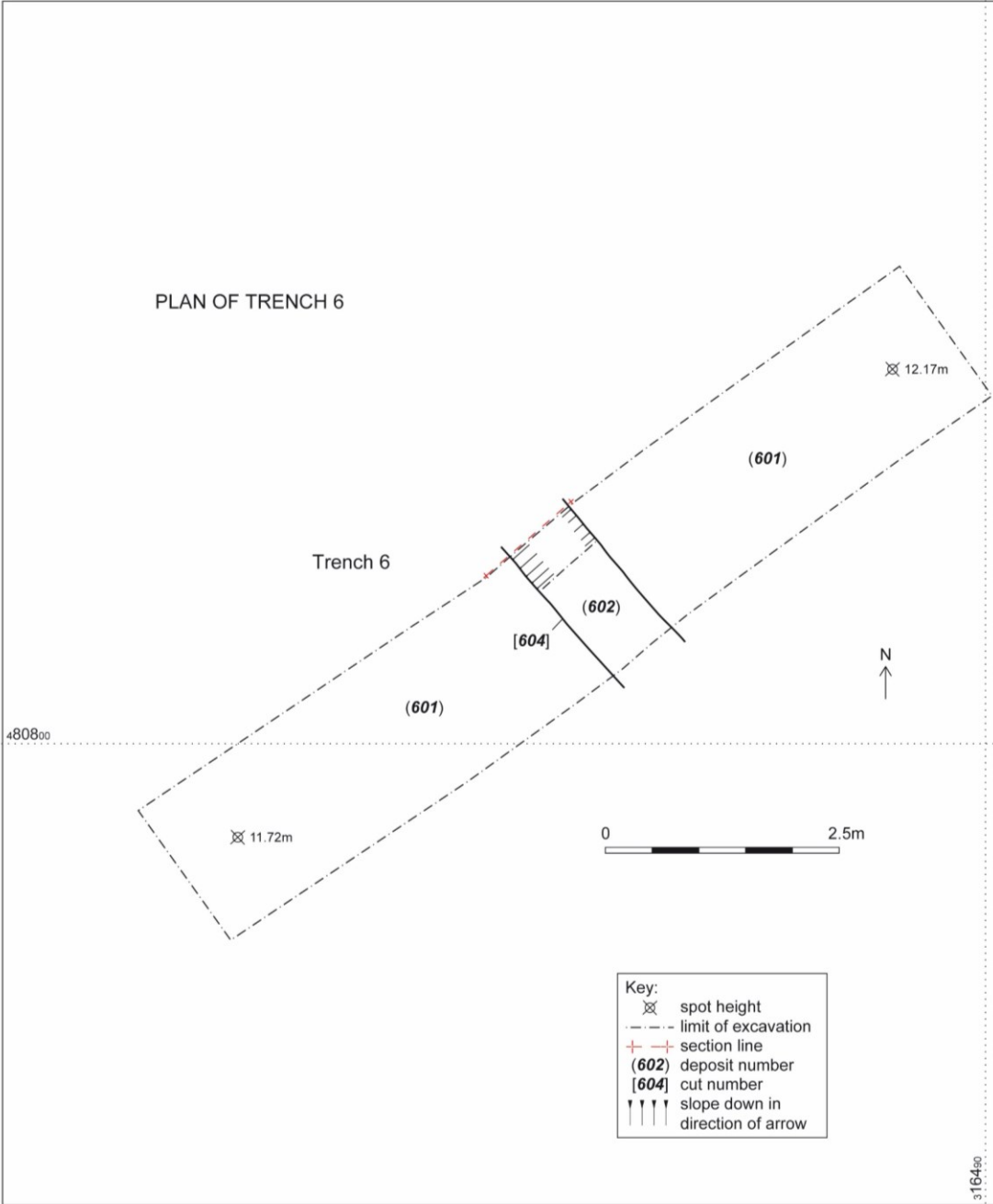




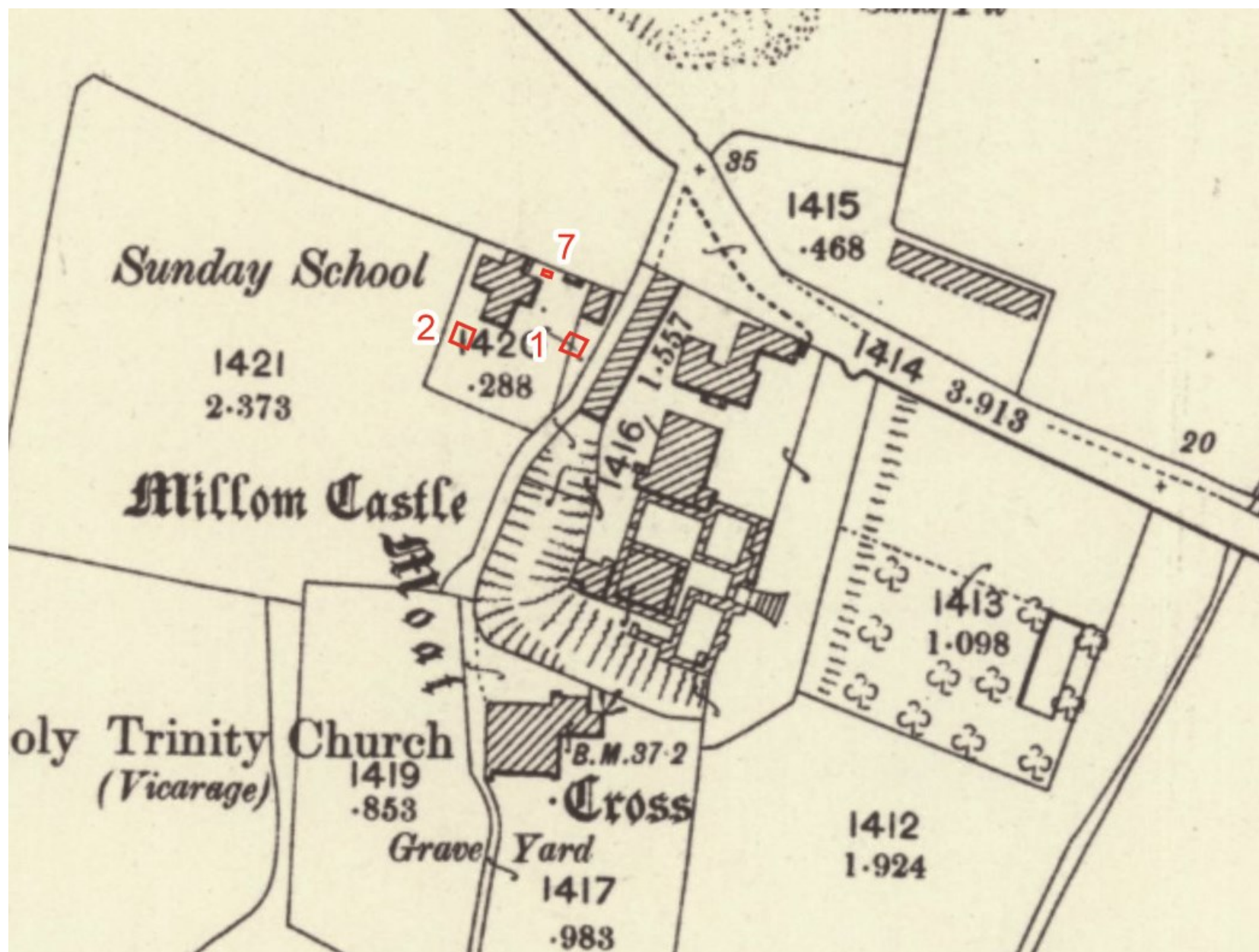




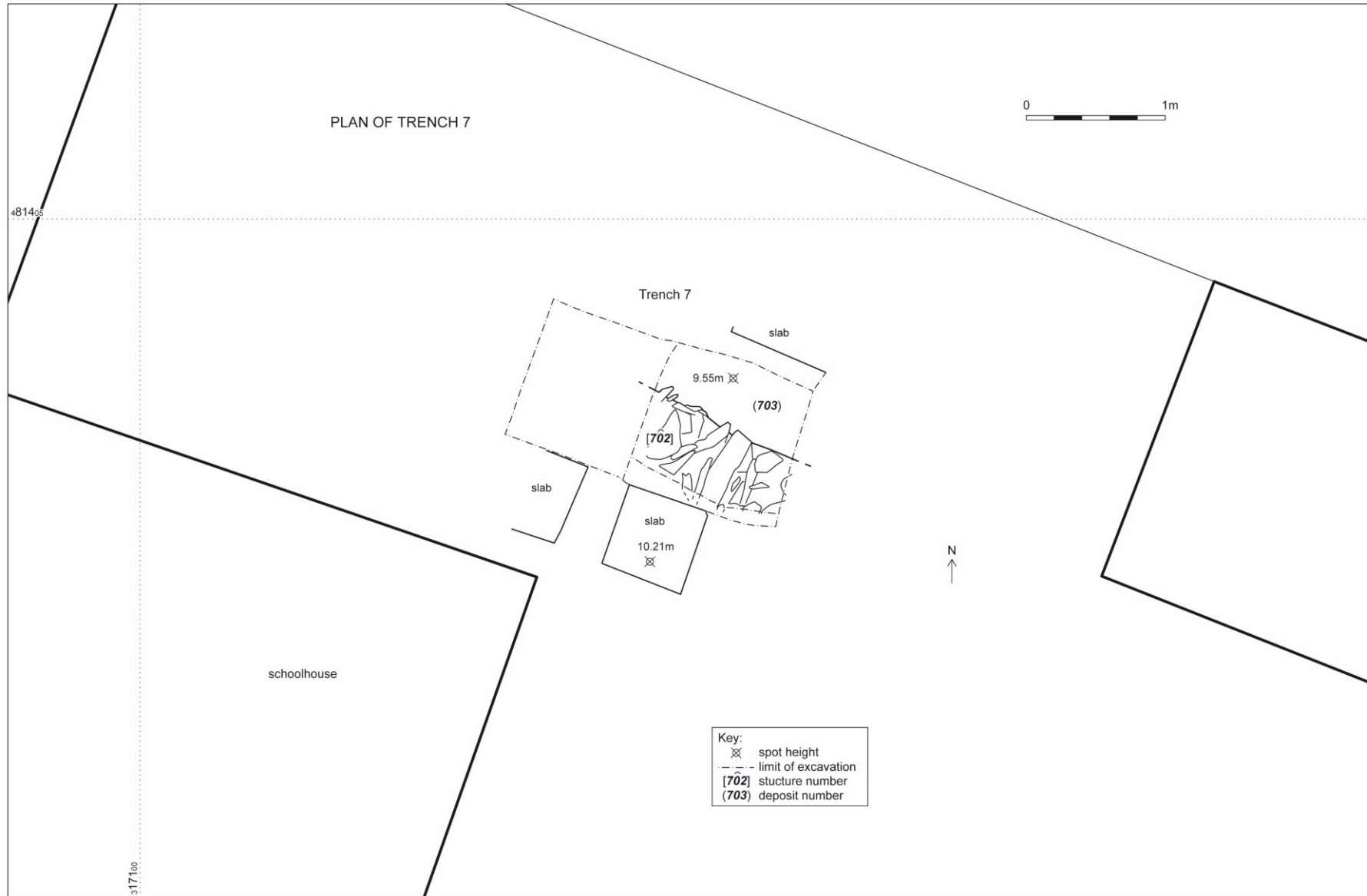










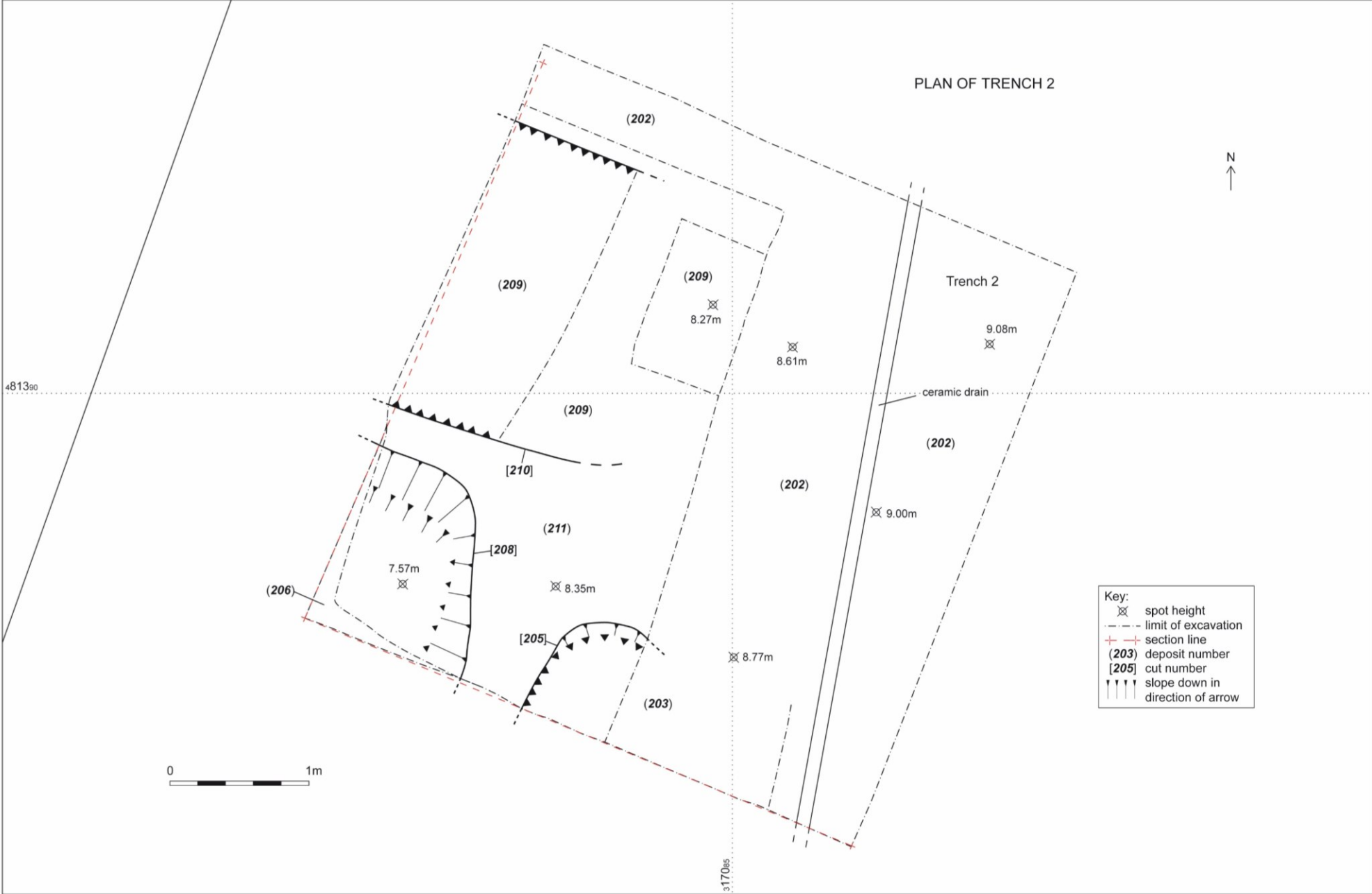








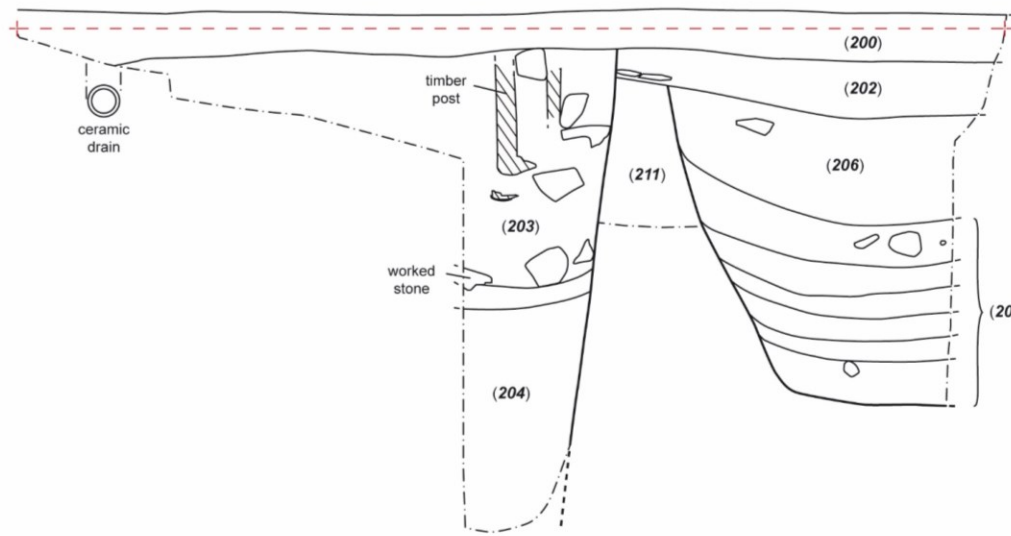
PLAN OF TRENCH 2



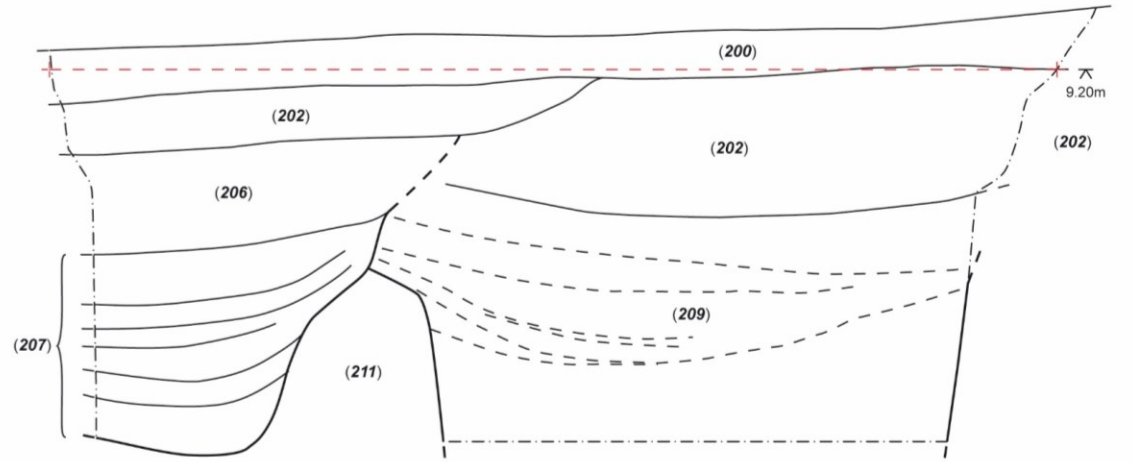
Key:

- ⊗ spot height
- - - limit of excavation
- + + section line
- (203) deposit number
- [205] cut number
- ↑↑↑ slope down in direction of arrow

NORTH-EAST FACING SECTION OF TRENCH 2



SOUTH-EAST FACING SECTION OF TRENCH 2

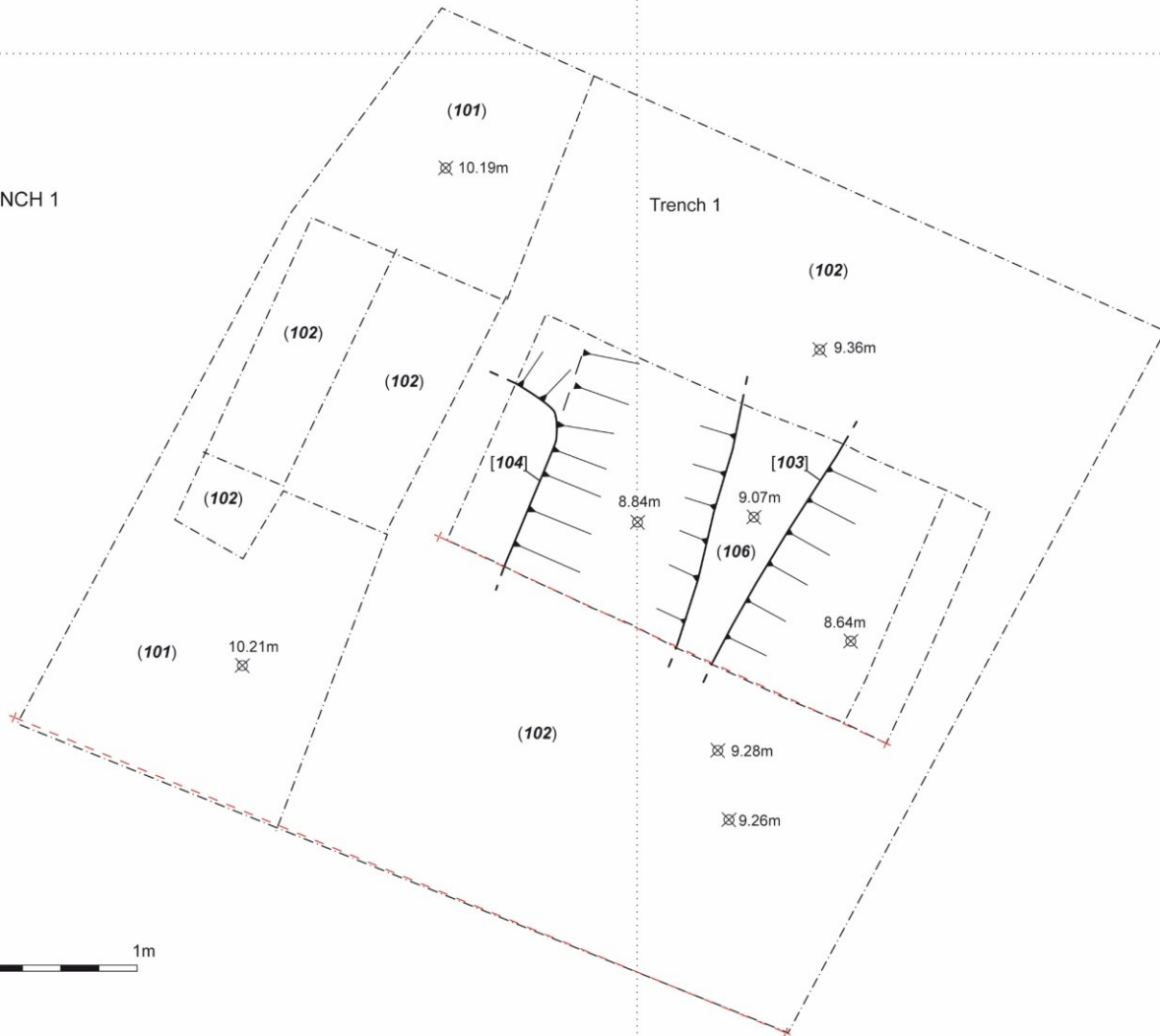








PLAN OF TRENCH 1

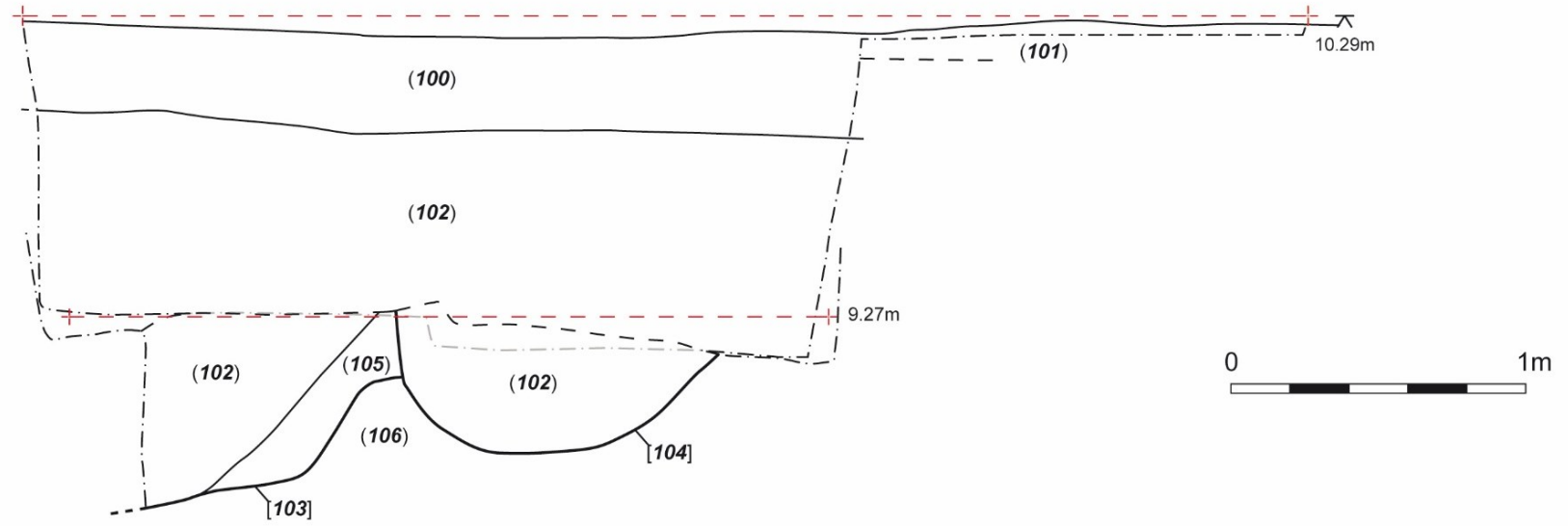


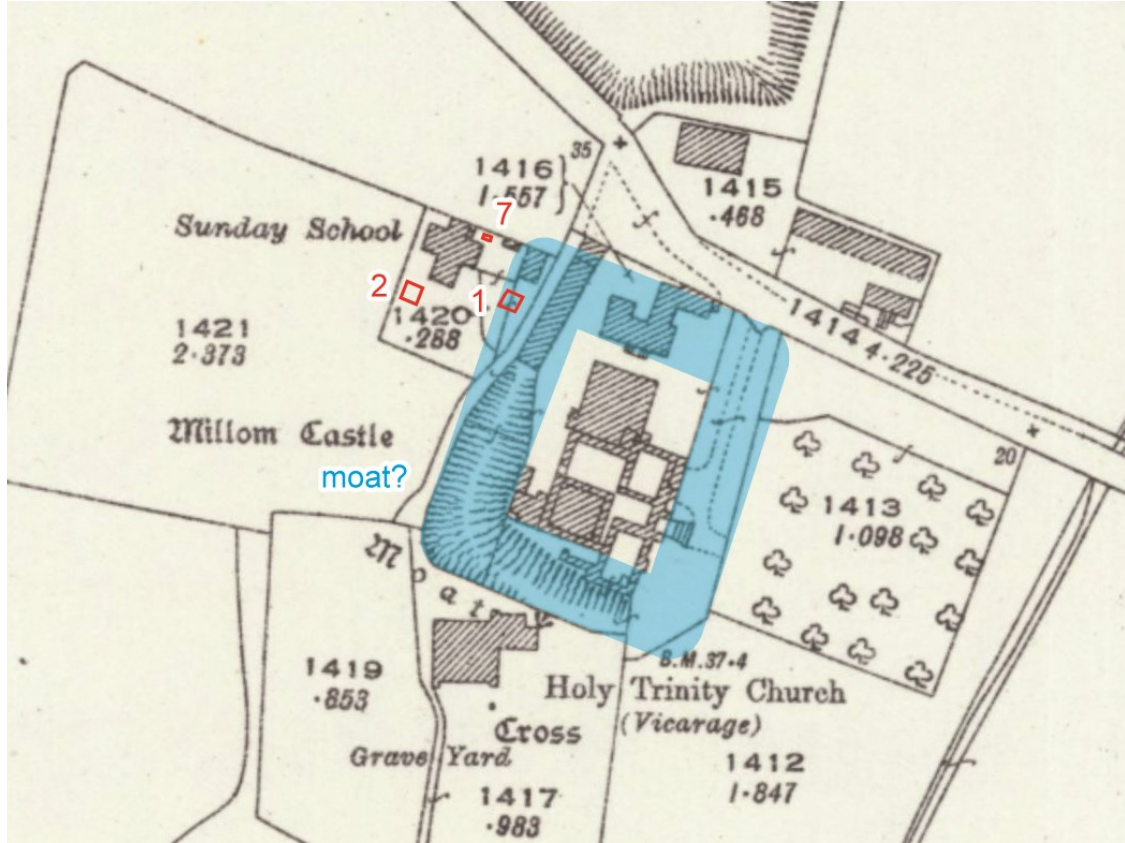
Key:

- ⊗ spot height
- - - limit of excavation
- + - - section line
- (102) deposit number
- [103] cut number
- ↑↑↑ slope down in direction of arrow

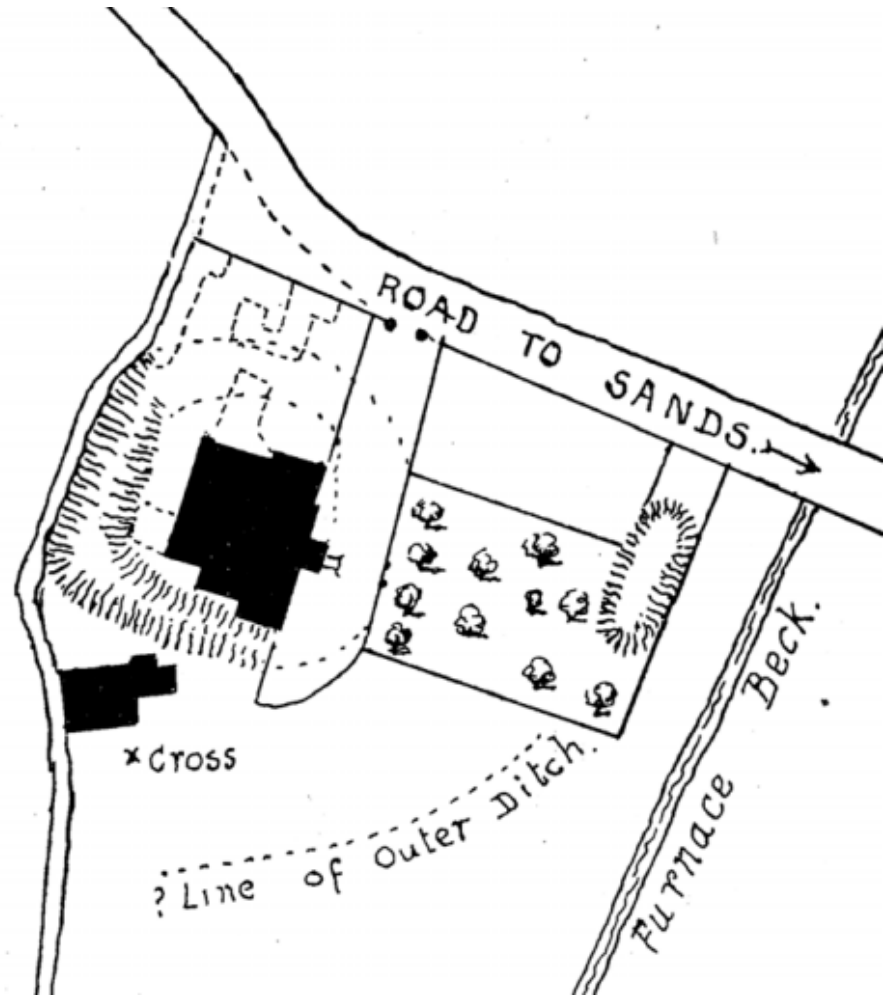


NORTH-EAST FACING SECTION OF TRENCH 1





Suggested original extent of the moat overlaid on the OS map of 1924



Cowper's suggested line of the moat (1924)



ME24

(701)

post-medieval pottery x790

ME24

(701)

Post-med. pottery



ME24

(100)

Pottery x 309

